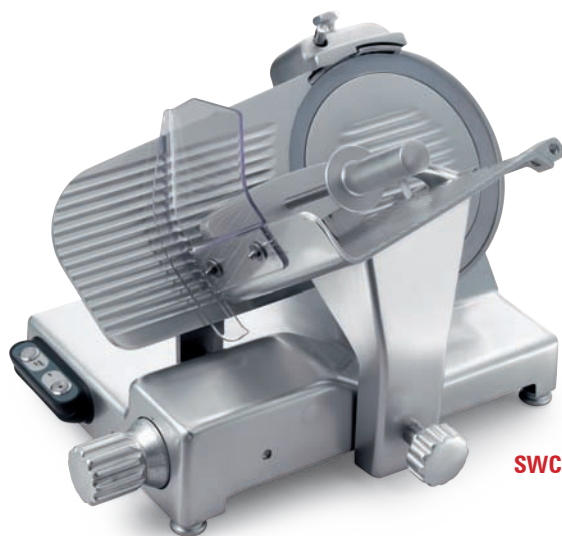


# SWCN

## affettatrici - slicing machines



SWCN TOP



SWCN



1 Ampio spazio tra lama e corpo macchina  
Remarkable clearance between blade and machine body



2 Spazioso piano per appoggio prodotto  
Large hopper

- Linea arrotondata priva di spigoli e viti in vista.
- Perno di scorrimento, cromato rettificato.
- Boccole di scorrimento autolubrificanti.
- Paracolpi su carrello in gomma vulcanizzata.
- Coperchio supporto vela smontabile.
- Parafetta in acciaio inox con incastro a baionetta.
- Tutte le minuterie acciaio inox.
- Sistema di tenuta stagna su puleggia.
- 41 mm di distanza fra la lama e la testa.
- Copertura inferiore.
- Scheda elettronica commutabile 110-220-380 V monofase e trifase.
- Affilatoio con vaschetta inferiore di protezione.
- Estrattore lama di serie.
- Inclinazione lama 38°.

### SWCN TOP

- Manopola alluminio.
- Piedini in alluminio telescopici con base in gomma.
- Pulsanti IP 67 in acciaio inox.
- Fornitura valigetta utensili.

### SWCN

- Manopole plastica.
- Piedini in gomma.
- Pulsanti IP 67 in plastica.

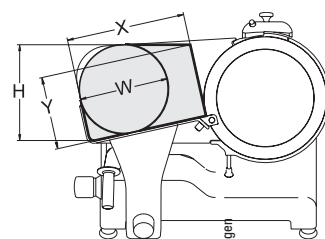
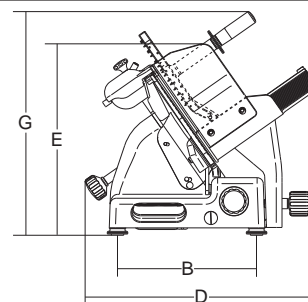
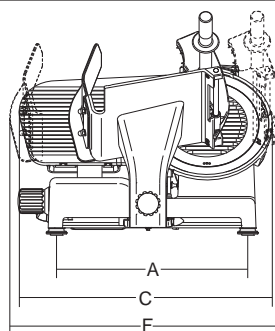
- Rounded design and no sharp edges and visible screws
- Chrome plated and ground slide rod.
- Self lubricating slide rod bushings.
- Vulcanized rubber stops on carriage.
- Removable support cover for thickness gauge plate.
- Stainless steel slice deflector with bayonet fitting.
- Stainless steel screws and fittings.
- Enclosed and sealed belt pulley.
- 41 mm distance between blade and motor.
- Bottom cover.
- Changeover electronic circuit 110-220-380 V single and three phase.
- Built in sharpening tool with bottom protection.
- Standard blade removal tool.
- 38° blade inclination.

### SWCN TOP

- Aluminium knob.
- Aluminium telescopic feet with rubber base.
- Stainless steel pushbuttons with IP67 protection rating.
- Maintenance tool kit.

### SWCN

- Plastic knob.
- Rubber finish feet.
- Plastic pushbuttons with IP67 protection rating.



	Ø Lama Ø Blade Ø Messer Ø Lame	Motor Motor Motor Moteur	Spessore taglio Cut thickness Schichtstärke Épaisseur de coupe	Corso carrello Run of carriage Wagenschub Course du chariot	Piatto Hopper Wagen grösse Plateau	A	B	C	D	E	F	G	X	Y	H	W	Peso netto Net weight Nettogewicht Poids net	Dimensioni imballo Shipping Verpack. abmessungen Dim. emballage	Peso lordo Gross weight Bruttogewicht Poids brut
	mm/inch.	watt/Hp	mm	mm	mm	mm	mm	mm	mm	mm	mm	mm	mm	mm	mm	mm	kg	mm	kg
SWCN 250	250/10"	147/0,20	20	275	240 x 230	428	290	560	495	365	660	500	230	140	190	175	24,4	800x600x520	27
SWCN 275	275/11"	210/0,29	20	275	240 x 230	428	290	580	495	360	650	495	230	155	208	185	25,5	800x600x520	28
SWCN 300	300/12"	210/0,29	20	275	240 x 230	428	290	590	495	355	640	495	230	175	220	200	26,5	800x600x520	29
SWCN 250 Top	250/10"	147/0,20	20	275	240 x 230	428	290	560	495	365	660	500	230	140	190	175	24,4	800x600x520	27
SWCN 275 Top	275/11"	210/0,29	20	275	240 x 230	428	290	580	495	360	650	495	230	155	208	185	25,5	800x600x520	28
SWCN 300 Top	300/12"	210/0,29	20	275	240 x 230	428	290	590	495	355	640	495	230	175	220	200	26,5	800x600x520	29

Ø Cuchilla  
Ø Lâmina  
Ø нож  
Ø 刀片

Motor  
Motor  
Motor  
Двигатель

Espeor corte  
Espessura corte  
Толишина  
切削厚度

Desplazamiento del carro  
Escorrimiento carrinho  
Ход каретки  
滑车行程

Piatto  
Plato  
Лоток  
盘子

A

B

C

D

E

F

G

X

Y

H

W

Peso netto  
Péso líquido  
Вес нетто  
净重

Dimensiones embalaje  
Dimensões embalagem  
Размеры упаковки  
包装尺寸

Peso bruto  
Peso bruto  
Вес брутто  
毛重



# SWM gravità

## affettatrici - slicing machines



**SWM 300**



**SWM 220 C**



**SWM 250 C**



**SWM 275 C**

- Fusione in lega di alluminio anodizzato.
- Ampio spazio tra motore e lama per un'agevole pulizia.
- Motore ventilato.
- Lama forgiata e temprata a forte spessore.
- Scorrimento carrello su boccole autolubrificanti e perni lappati.
- Viteria e parafetta in acciaio inox.
- Robusto supporto vela.
- Affilatoio incorporato in fusione con doppio smeriglio di serie.
- Dimensioni compatte ma con grande capacità di taglio.
- Versione CE Professionale con sblocco su carro.
- Disponibili lame teflonate o dentate.
- Inclinazione lama 25°.

- Anodized cast aluminium alloy
- Great distance between blade and motor for easy cleaning
- Ventilated motor
- Forged, hardened large thickness blades
- Carriage running on self-lubricating bushes and lapped pins
- Stainless steel screws and slice deflector
- Strong thickness gauge support
- Cast-in sharpener assembly
- Compact dimensions and great cutting capacity
- CE professional with device for releasing the carriage.
- Teflon coated or toothed blades are available on demand
- 25° blade inclination.



1 Meccanismo sgancio carro CE Prof  
Device for releasing the carriage

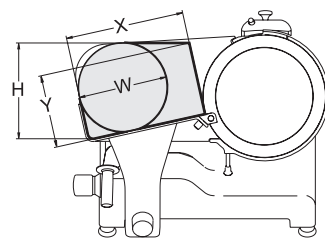
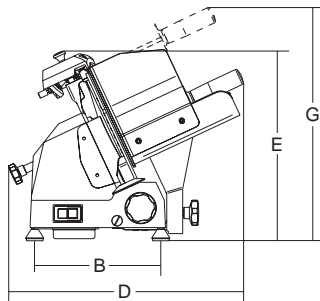
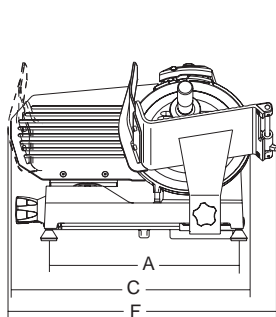


2 Ampio spazio tra lama e corpo macchina  
More space between blade and motor

**SWM 275**

3

**Optional:**  
Parafetta tondo rimovibile  
Removable round slicer deflector



	Ø Lama Ø Blade Ø Messer Ø Lane	Motore Motor Moteur	Spessore taglio Cut thickness Schnittbreite Epaisseur de coupe	Corsa carrello Run of carriage Wagenschub Course du chariot	Piatto Hopper Wagen Plateau	A	B	C	D	E	F	G	X	Y	H	W	Peso netto Net weight Nettogewicht Poids net	Dimensioni imballo Shipping Verpack. Dim. emballage	Peso lordo Gross weight Bruttogewicht Poids brut
	mm/inch.	watt/Hp	mm	mm	mm	mm	mm	mm	mm	mm	mm	mm	mm	mm	mm	mm	kg	mm	kg
<b>SWM 220 C</b>	220/9"	147-0,20	13	245	230x230	395	245	480	560	370	570	475	210	135	170	160	17	600x500 x420	22
<b>SWM 250 C</b>	250/10"	147-0,20	13	245	230x230	395	245	500	560	370	570	475	215	145	180	170	18	600x500 x420	22,5
<b>SWM 275 C</b>	275/11"	147-0,20	13	245	230x230	395	245	535	560	370	570	475	215	165	200	190	20	800x600 x520	25
<b>SWM 275</b>	275/11"	210-0,29	13	285	250x275	435	295	580	610	400	640	510	245	175	210	200	20	800x600 x520	25
<b>SWM 300</b>	300/12"	210-0,29	13	285	250x275	435	295	600	610	420	640	510	250	185	225	210	21	800x600 x520	26
	Ø Cuchilla Ø Lâmina Ø лезвие Ø 刀片	Motor Motor Двигатель 电机	Espresso corte Espessura corte Толщина нарезки 切前厚度	Desplazamiento del carro Escompartimento carrinho Ход каретки 滑车行程	Plato Prato Лоток 盒子	A	B	C	D	E	F	G	X	Y	H	W	Peso neto Peso líquido Вес нетто 净重	Dimensiones embalaje Dimensões embalagem Размеры упаковки 包装尺寸	Peso bruto Peso bruto Вес брутто 毛重

# SWM verticale

## affettatrici - slicing machines



**SWM 300 vert. BS**



**SWM 250 C vert.**



**SWM 275 C vert.**

- Fusione in lega di alluminio anodizzato.
- Ampio spazio tra motore e lama per un'agevole pulizia.
- Motore ventilato.
- Lama forgiata e temprata a forte spessore.
- Perni scorrimento lappati.
- Viteria e parafetta in acciaio inox.
- Robusto supporto vela.
- Affilatoio incorporato in fusione con doppio smeriglio di serie.
- Dimensioni compatte ma con grande capacità di taglio.
- Versione CE Professionale con sblocco su carro.

- Anodized cast aluminium alloy
- Great distance between blade and motor for easy cleaning
- Ventilated motor
- Forged, hardened large thickness blades
- Lapped sliding pins
- Stainless steel screws and slice deflector
- Strong thickness gauge support
- Cast-in sharpener assembly
- Compact dimensions but great cutting capacity
- Device for releasing the carriage



**SWM 250-275 C vert. BS**



**SWM 275 vert. BS**





1  
Lama teflonata (opzionale)  
Teflon blades (optional)



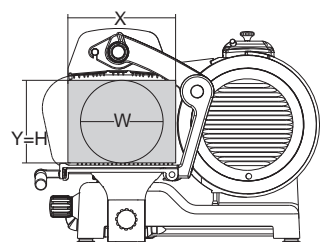
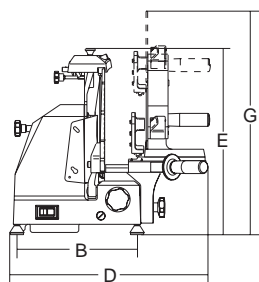
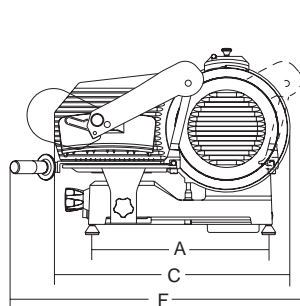
2  
Maschera in plexiglass per estrazione lama  
Plexiglass guard for blade extraction



3  
Meccanismo sgancio piatto affettatrice  
Device for releasing the carriage



4  
Protezione inferiore  
Underside motor protection plate

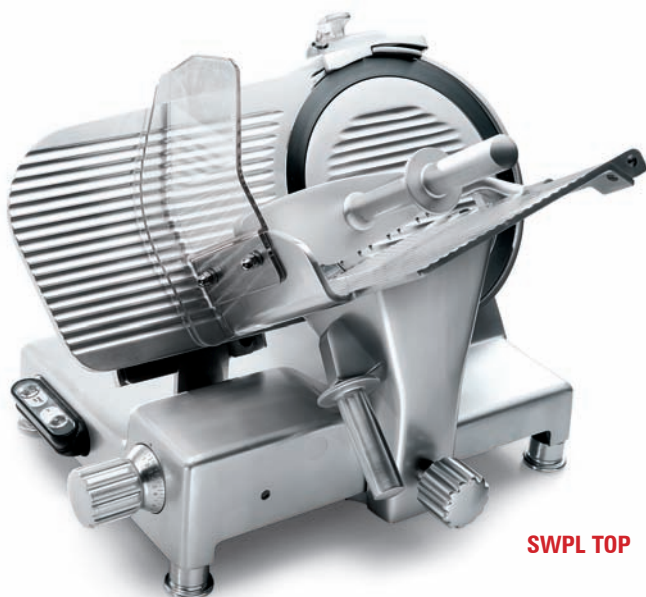


	Ø Lama Ø Blade Ø Messer Ø Lame	Motore Motor Motor Moteur	Spessore taglio Cut thickness Schnittstärke Epaisseur de coupe	Corsa carrello Run of carriage Wagenschub Course du chariot	Piatto Hopper Wagen größe Plateau	A	B	C	D	E	F	G	X	Y	H	W	Peso netto Net weight Nettogewicht Poids net	Dimensioni imballo Shipping Verpack. abmessungen Dim. emballage	Peso lordo Gross weight Bruttogewicht Poids brut
	mm/inch.	watt/HP	mm	mm	mm	mm	mm	mm	mm	mm	mm	mm	mm	mm	mm	mm	kg	mm	kg
<b>SWM 220 C Vert.</b>	220/9"	147-0,20	13	225	230x235	400	260	500	535	400	570	405	205	150	150	150	17	600x510 x510	24
<b>SWM 250 C Vert.</b>	250/10"	147-0,20	13	230	230x235	400	260	510	535	410	570	410	205	170	170	170	18	600x510 x510	25
<b>SWM 275 C Vert.</b>	275/11"	147-0,20	13	220	230x235	400	260	530	535	420	570	425	225	205	205	205	18	600x510 x510	25
<b>SWM 250 C Vert. BS</b>	250/10"	147-0,20	13	215	275x270	400	260	510	480	415	700	600	270	190	190	190	21,5	750x650 x590	28,5
<b>SWM 275 C Vert. BS</b>	275/11"	147-0,20	13	225	260x275	400	260	530	480	420	700	770	270	200	200	200	22	750x650 x590	29
<b>SWM 275 Vert. BS</b>	275/11"	210-0,29	13	220	285x260	440	300	580	500	455	740	630	255	205	205	205	22	750x650 x590	29
<b>SWM 300 Vert. BS</b>	300/12"	210-0,29	13	265	260x275	440	300	585	540	460	740	770	255	215	215	215	27	750x650 x590	34
	Ø Cuchilla Ø Lamina Ø лезвия Ø 刀片	Motor Motor Двигатель 电机	Espesor corte Cutting blade Толщина нарезки 切削厚度	Desplazamiento del carro Escorrimiento carrinho Ход каретки 滑车行程	Piatto Prato Лоток 盘子	A	B	C	D	E	F	G	X	Y	H	W	Peso netto Peso líquido Бес. нетто 净重	Dimensiones embalaje Dimensões embalagem Размеры упаковки 包装尺寸	Peso bruto Peso bruto Бес. брутто 毛重



# SWPL

## affettatrici - slicing machines



**SWPL TOP**



**SWPL**



**SWPL TOP 330 USA**

- Linea arrotondata priva di spigoli e viti in vista.
- Perno di scorrimento, cromato rettificato.
- Boccole di scorrimento in ghisa lappate.
- Paracolpi su carrello in gomma vulcanizzata.
- Coperchio supporto vela smontabile.
- Parafetta in acciaio inox con incastro a baionetta.
- Tutte le minuterie acciaio inox.
- Sistema di tenuta stagna su puleggia.
- 49,5 mm di distanza fra la lama e la testa.
- Copertura inferiore.
- Scheda elettronica commutabile 110-220-380 V monofase e trifase.
- Affilatoio con vaschetta inferiore di protezione.
- Estrattore lama di serie.
- Inclinazione lama 35°.

### SWPL TOP

- Manopola alluminio.
- Piedini in alluminio telescopici con base in gomma.
- Pulsanti IP 67 in acciaio inox.
- Fornitura valigetta utensili.

### SWPL

- Manopole plastica.
- Lama estera.
- Piedini in gomma.
- Pulsanti IP 67 in plastica.

### SWPL Ingranaggi

- Trasmissione con riduttore ermetico a vite senza fine. Lubrificazione a bagno d'olio.
- Non disponibile versione automatica.

### SWPL Automatica

- Pulsantiera ergonomica con pulsanti IP 67.
- 3 regolazioni della velocità,
- 3 regolazioni della corsa del carrello,
- Conteggio delle fette effettuate.
- Impostazione delle fette da tagliare con stop automatico della macchina.
- Motore di trasmissione completamente stagno.
- Trasmissione del moto con cinghia dentata.
- Sistema di sgancio carrello per taglio manuale.

### Accessori disponibili

- Spondina per piatto.

- *Rounded design, no sharp edges and visible screws.*
- *Chrome plated and ground slide rod.*
- *Lapped cast iron slide rod bushing.*
- *Vulcanized rubber stops on carriage.*
- *Removable support cover for thickness gauge plate.*
- *Stainless steel slice deflector with bayonet fitting.*
- *Stainless steel screws and fittings.*
- *Enclosed and sealed belt pulley.*
- *49,5 mm distance between blade and motor.*
- *Bottom cover.*
- *Changeover electronic circuit 110-220-380 V single and three phase.*
- *Built in sharpening tool with bottom protection.*
- *Standard blade removal tool.*
- *35° blade inclination.*

### SWPL TOP

- *Aluminium knob.*
- *Aluminium telescopic feet with rubber base.*
- *Stainless steel pushbuttons with IP67 protection rating.*
- *Maintenance tool kit.*

### SWPL Standard

- *Plastic knob.*
- *Rubber finish feet.*
- *Plastic pushbuttons with IP67 protection rating.*

### SWPL Ingranaggi

- *Enclosed and sealed worm gear reduction unit.*
- *Oil bath lubrication.*
- *Automatic version not available.*

### SWPL Automatica

- *Ergonomic controls – push buttons with IP67 protection rating.*
- *3 speed selection*
- *3 different adjustments for carriage travel.*
- *Slice counter.*
- *Slice number setting with automatic stop feature.*
- *Enclosed and sealed drive motor.*
- *Positive drive belt.*
- *Carriage release system for manual slicing.*

### Accessori disponibili

- *Side guard for food tray.*



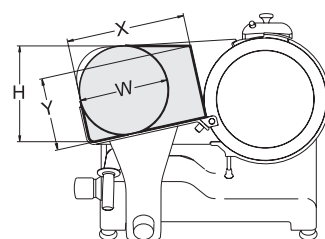
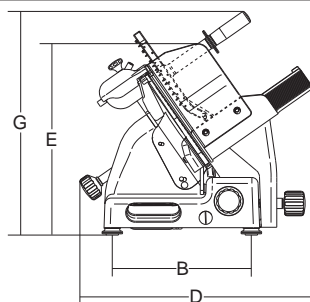
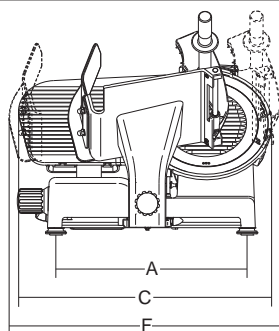
1 Ampio spazio tra lama e corpo macchina  
Remarkable clearance between blade and machine body



2 Spazioso piano per appoggio prodotto  
Large hopper



**SWPL TOP 300**  
**automatica**



	Ø Lama Ø Blade Ø Messer Ø Lame	Motore Motor Motor Moteur	Spessore taglio Cut thickness Schnittbreite Épaisseur de coupe	Corsa carrello Run of carriage Wagenschub Course du chariot	Piatto Hopper Wagen größe Plateau	A	B	C	D	E	F	G	X	Y	H	W	Peso netto Net weight Nettogewicht Poids net	Dimensioni imballo Shipping Verpack abmessungen Dim. emballage	Peso lordo Gross weight Bruttogewicht Poids brut
	mm/inch.	watt/HP	mm	mm	mm	mm	mm	mm	mm	mm	mm	mm	mm	mm	mm	mm	kg	mm	kg
SWPL 300	300/12"	275-0,37	30	310	305 x 270	465	340	615	547	465	710	545	270	190	240	220	35	760x640x700	40
SWPL 330	330/13"	275-0,37	30	310	305 x 270	465	340	645	570	455	710	535	270	210	260	240	36	760x640x700	41
SWPL 350	350/14"	275-0,37	30	310	305 x 270	465	340	660	575	455	710	530	270	230	275	255	37	760x640x700	42
SWPL 300 Top	300/12"	275-0,37	30	310	305 x 270	465	340	615	547	465	710	545	270	190	240	220	35	760x640x700	40
SWPL 330 Top	330/13"	275-0,37	30	310	305 x 270	465	340	645	570	455	710	535	270	210	260	240	36	760x640x700	41
SWPL 350 Top	350/14"	275-0,37	30	310	305 x 270	465	340	660	575	455	710	530	270	230	275	255	37	760x640x700	42
SWPL 300 ingr.	300/12"	400-0,54	30	310	305 x 270	465	340	615	547	465	710	545	270	190	240	220	36	760x640x700	41
SWPL 330 ingr.	330/13"	400-0,54	30	310	305 x 270	465	340	645	570	455	710	535	270	210	260	240	37	760x640x700	42
SWPL 350 ingr.	350/14"	400-0,54	30	310	305 x 270	465	340	660	575	455	710	530	270	230	275	255	38	760x640x700	43
SWPL 300 aut.	300/12"	275 + 200/0,37 + 0,27	30	310	365 x 270	465	340	615	660	465	730	650	270	190	240	220	-	760x640x700	-
SWPL 330 aut.	330/13"	275 + 200/0,37 + 0,27	30	310	365 x 270	465	340	645	660	455	730	650	270	210	260	240	-	760x640x700	-
SWPL 350 aut.	350/14"	275 + 200/0,37 + 0,27	30	310	365 x 270	465	340	660	660	455	730	650	270	230	275	255	-	760x640x700	-
SWPL 300 USA	300/12"	210-0,30	30	310	305 x 245	465	340	615	665	450	710	615	245	170	250	220	-	760x640x700	-
SWPL 330 USA	330/13"	210-0,30	30	310	305 x 245	465	340	615	665	450	710	615	245	190	270	235	36	760x640x700	45
SWPL 350 USA	350/14"	210-0,30	30	310	305 x 245	465	340	615	665	450	710	615	245	210	285	250	-	760x640x700	-

Ø Cuchilla  
Ø Lâmina  
Ø лезвие  
Ø 刀片

Motor  
Motor  
Двигатель  
电机

Espesor corte  
Espessura corte  
Толщина нарезки  
切削厚度

Desplazamiento del carro  
Escorrimiento carrinho  
Ход каретки  
滑车行程

Piatto  
Prato  
Лоток  
盘子

A

B

C

D

E

F

G

X

Y

H

W

Peso netto  
Peso líquido  
Вес нетто  
净重

Dimensiones embalaje  
Dimensões embalagem  
Размеры упаковки  
包装尺寸

Peso bruto  
Peso bruto  
Вес брутто  
毛重





# SWT

## affettatrici - slicing machines



**SWT 275**



**SWT 195 - 220**



**SWT 220 A.I. - 250**



1 Paramano piatto  
Hand guard



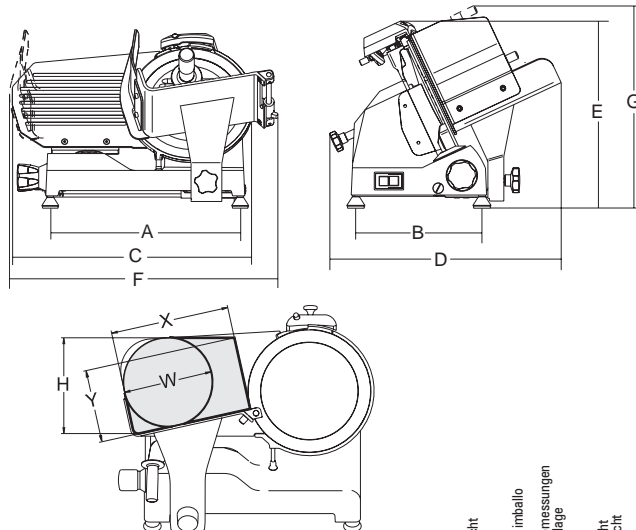
2 Protezione inferiore  
Underside motor protection plate



3 Affilatoio incorporato 195-220  
Without built-in sharpener 195-220

- Fusione in lega di alluminio anodizzato.
- Basamento piatto per una facile pulizia.
- Silenzioso e robusto motore asincrono.
- Trasmissione con robusta cinghia poliV.
- Lama forgiata e temprata a forte spessore.
- Scorrimento carrello su boccole autolubrificanti.
- Affilatoio incorporato in fusione con doppio smeriglio di serie dal modello 220 A.I. in su.
- Disponibili lame teflonate o dentate.
- Inclinazione lama 25°.

- Anodized cast aluminium alloy
- Flat base for easy cleaning
- Strong and silent-running asynchronous motor
- Reliable poliV belt drive
- Forged, hardened large thickness blades
- Carriage running on self-lubricating bushes
- Cast-in sharpener
- Cast-in sharpner is standard for all models bigger than 220 A.I.
- Teflon coated or toothed blades available
- 25° blade inclination.



	Ø Lama Ø Blade Ø Messer Ø Lame	Motore Motor Motor Moteur	Spessore taglio Cut thickness Dicken Schneitbreite Epaisseur de coupe	Corsa carrello Run or carriage Verfahrensbah Course du chariot	Piatto Hopper Wagen grösse Plateau	A	B	C	D	E	F	G	X	Y	H	W	Peso netto Net weight Nettogewicht Poids net	Dimensioni imballo Shipping Verpack abmessungen Dim. emballage	Peso lordo Gross weight Bruttogewicht Poids brut
	mm/inch.	watt/Hp	mm	mm	mm	mm	mm	mm	mm	mm	mm	mm	mm	mm	mm	mm	kg	mm	kg
SWT 195	195/8"	110-0,15	12	162	185x165	310	220	375	355	300	385	360	140	110	135	120	10,5	430x400 x370	13
SWT 220	220/9"	145-0,20	13	245	200x220	380	250	440	410	330	550	400	200	130	145	140	13	600x500 x420	17
SWT 220 A.I.	220/9"	145-0,20	13	245	200x220	380	250	440	410	350	550	400	200	140	160	155	13,5	600x500 x420	17,5
SWT 250 C	250/10"	145-0,20	13	240	230x230	380	250	480	410	360	500	410	185	165	180	180	14	600x500 x420	18
SWT 250	250/10"	145-0,20	13	235	220x225	412	255	480	410	360	515	455	210	170	190	180	15,5	600x500 x420	19,5
SWT 275	275/11"	145-0,20	13	235	220x225	412	255	520	410	370	525	455	200	190	205	205	16	600x510 x510	21

Ø Cuchilla  
Ø Lâmina  
Ø лезвия  
Ø 刀片

Motor  
Motor  
Двигатель  
电机

Spessore corte  
Espesor de corte  
Есперса corte  
Толщина нарезки  
切削厚度

Desplazamiento del carro  
Escorrimiento carrinho  
Ход каретки  
滑車行程

Piatto  
Prato  
Лоток  
盘子

Peso netto  
Peso líquido  
Бес нетто  
淨重

Dimensiones embalaje  
Dimensões embalagem  
Размеры упаковки  
包裝尺寸

Peso bruto  
Peso bruto  
Бес брутто  
毛重





# SWV MTG

affettatrici - slicing machines



**SWV MTG TOP BS**



**SWV MTG BS**

- Linea arrotondata priva di spigoli e facile da pulire
- Perno di scorrimento, cromato rettificato e lappato.
- Boccole di scorrimento autolubrificanti
- Paracolpo su carrello in gomma vulcanizzata.
- Coperchio supporto vela smontabile.
- Apertura vela trasversale 30 mm.
- Parafetta rimovibile in acciaio inox con incastro rapido a baionetta.
- Tutte le minuterie acciaio inox.
- Copertura inferiore con accesso diretto ai componenti elettrici.
- Scheda elettromeccanica commutabile 110-220-380 V monofase e trifase.
- Affilatoio con vaschetta inferiore di protezione.
- Sistema di tenuta stagna su puleggia.
- 48 mm di distanza fra la lama e il corpo macchina
- Estrattore lama di serie.

## **SWV MTG TOP**

- Pulsanti IP 67 in acciaio inox.
- Manopole alluminio
- Piedini in alluminio telescopici con base in gomma.
- Kit manutenzione e sanificazione in pratica valigetta

## **SWV MTG**

- Manopole in plastica.
- Piedini in gomma.
- Pulsanti IP 67 in plastica.

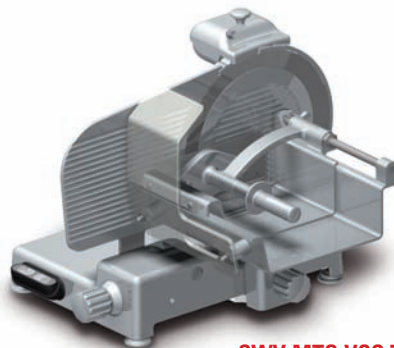
- *Rounded design and no sharp edges and easy cleaning*
- *Chrome plated ground and lapped slide rod*
- *Self lubricating slide rod bushings.*
- *Vulcanised rubber stops on carriage*
- *Removable support cover for thickness gauge plate*
- *Slicing thickness 30 mm.*
- *Stainless steel slice deflector with snap-on bayonet fitting*
- *Stainless steel screws and fittings*
- *Bottom cover for accessing electrical components*
- *Changeover electronic circuit 110-220-380 V single and three phase.*
- *Built-in sharpening tool with bottom protection*
- *Enclosed and sealed belt pulley.*
- *48 mm distance between blade and motor.*
- *Standard blade removal tool*

## **SWV MTG TOP**

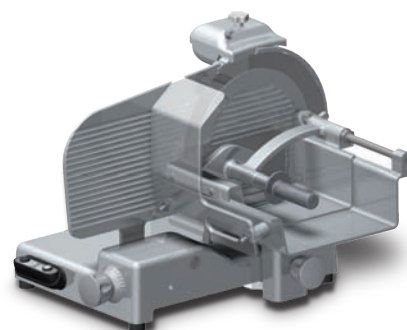
- *Stainless steel pushbuttons with IP67 protection rating.*
- *Aluminium knobs*
- *Aluminium telescopic feet with rubber base*
- *Kit maintenance and sanitation in practical suitcase*

## **SWV MTG**

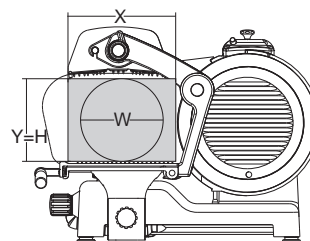
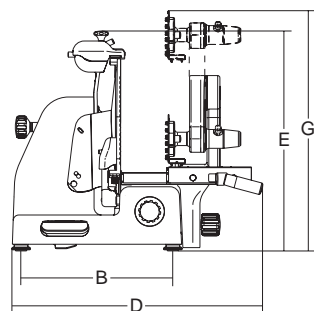
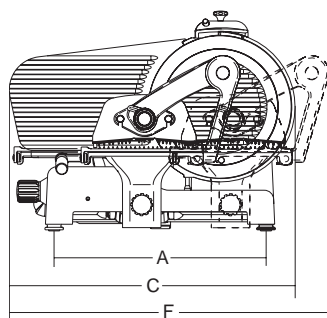
- *Plastic knobs*
- *Rubber feet*
- *Plastic pushbuttons with IP67 protection rating.*



SWV MTG VCS TOP



SWV MTG VCS



	Ø Lama Ø Blade Ø Messer Ø Lame	Motore Motor Moteur	Spessore taglio Cut thickness Schnittbreite Epaisseur de coupe	Conca carrello Rid of carriage Wagenschub Course du chariot	Piatto Hopper Wagen gröse Plateau	A	B	C	D	E	F	G	X	Y	H	W	Peso netto Net weight Nettogewicht Poids net	Dimensioni imballo Shipping Verpack, abmessungen Dim. emballage	Peso lordo Gross weight Bruttogewicht Poids brut
	mm/inch.	watt/Hp	mm	mm	mm	mm	mm	mm	mm	mm	mm	mm	mm	mm	mm	mm	kg	mm	kg
<b>SWV MTG 300 BS</b>	300/12"	210-0,30	30	310	295 x 270	468	338	635	600	500	750	695	270	230	230	230	-	-	-
<b>SWV MTG 330 BS</b>	330/13"	210-0,30	30	310	295 x 270	468	338	645	600	515	750	705	270	240	240	240	-	-	-
<b>SWV MTG 350 BS</b>	350/14"	210-0,30	30	310	295 x 270	468	338	660	600	530	750	715	270	250	250	250	-	-	-
<b>SWV MTG 300 BS Top</b>	300/12"	210-0,30	30	310	295 x 270	468	338	635	600	500	750	695	270	230	230	230	-	-	-
<b>SWV MTG 330 BS Top</b>	330/13"	210-0,30	30	310	295 x 270	468	338	645	600	515	750	705	270	240	240	240	-	-	-
<b>SWV MTG 350 BS Top</b>	350/14"	210-0,30	30	310	295 x 270	468	338	660	600	530	750	715	270	250	250	250	-	-	-
<b>SWV MTG 300 VCS</b>	300/12"	210-0,30	30	310	340 x 250	468	338	635	685	500	720	560	250	225	225	225	-	-	-
<b>SWV MTG 330 VCS</b>	330/13"	210-0,30	30	310	340 x 250	468	338	645	685	515	720	560	250	235	235	235	-	-	-
<b>SWV MTG 350 VCS</b>	350/14"	210-0,30	30	310	340 x 250	468	338	660	685	530	720	560	250	245	245	245	-	-	-
<b>SWV MTG 300 VCS Top</b>	300/12"	210-0,30	30	310	340 x 250	468	338	635	685	500	720	560	250	225	225	225	-	-	-
<b>SWV MTG 330 VCS Top</b>	330/13"	210-0,30	30	310	340 x 250	468	338	645	685	515	720	560	250	235	235	235	-	-	-
<b>SWV MTG 350 VCS Top</b>	350/14"	210-0,30	30	310	340 x 250	468	338	660	685	530	720	560	250	245	245	245	-	-	-
<b>SWV MTG 300 VCO</b>	300/12"	210-0,30	30	310	240 x 250	468	338	635	650	500	675	500	240	165	165	165	-	-	-
<b>SWV MTG 330 VCO</b>	330/13"	210-0,30	30	310	240 x 250	468	338	645	650	515	675	515	240	165	165	165	-	-	-
<b>SWV MTG 300 VCO Top</b>	300/12"	210-0,30	30	310	240 x 250	468	338	635	650	500	675	500	240	165	165	165	-	-	-
<b>SWV MTG 330 VCO Top</b>	330/13"	210-0,30	30	310	240 x 250	468	338	645	650	515	675	515	240	165	165	165	-	-	-

Ø Cuchilla  
Ø Lamina  
Ø Messer  
Ø 刀片

Motor  
Motor  
Двигатель  
电机

Espresso corte  
Espresso corte  
Толщина нарезки  
切削厚度

Desplazamiento del carro  
Escombrador  
Ход каретки  
滑车行程

Piatto  
Prato  
Лоток  
盒子

A

B

C

D

E

F

G

X

Y

H

W

Peso netto  
Peso liquido  
Вес нетто  
净重

Dimensioni emballe  
Dimenses embalagem  
Размеры упаковки  
包装尺寸

Peso bruto  
Peso bruto  
Вес брутто  
毛重